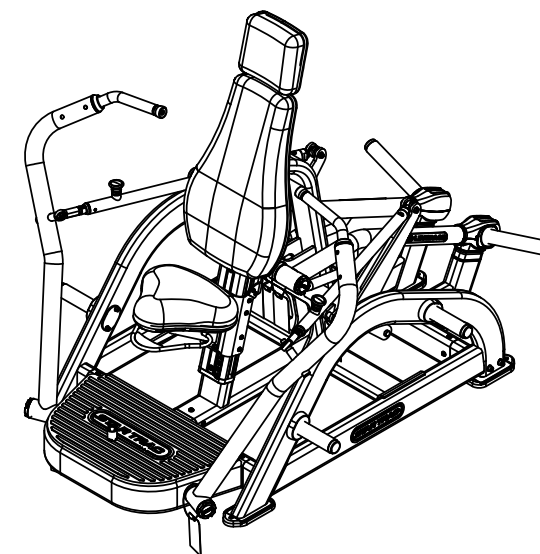
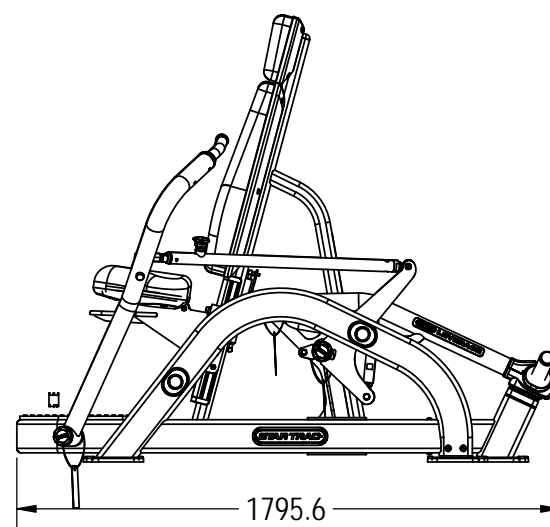
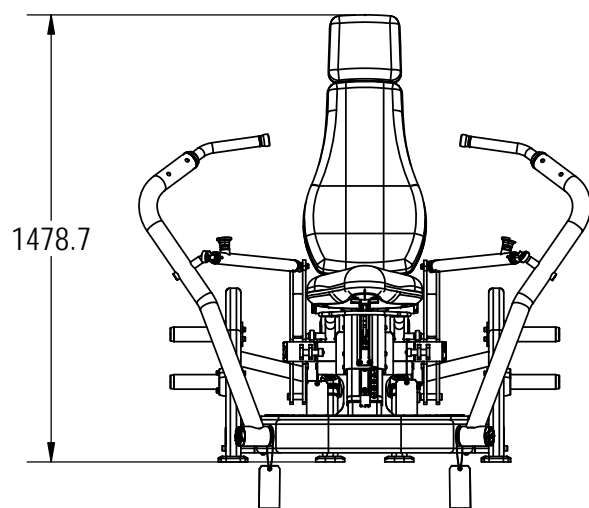
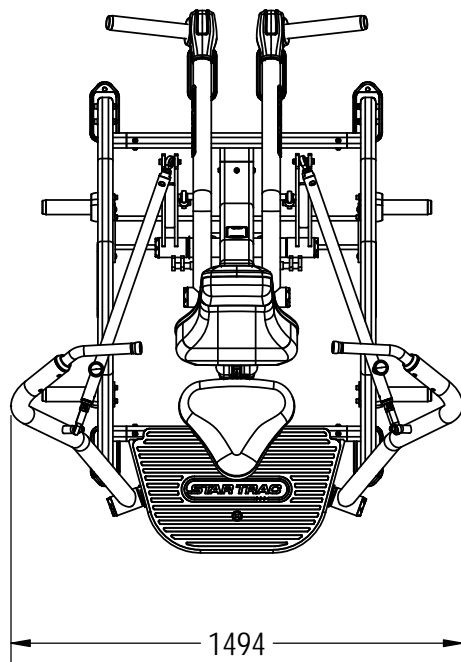


NOTES:

1. ASSEMBLE AND INSPECT PER SOP 620-7918.
2. COLOR DICTATED BY THE SALES ORDER.
 - a. COLOR: -XX COLOR DESIGNATOR AS SPECIFIED IN SOP 620-8222.
 - b. THE -XX CAN RESULT IN ONE COLOR FOR THE METAL SHROUD AND A DIFFERENT COLOR FOR THE METAL FRAME ALSO WITH A -XX LISTED ON THE BOM.
 - c. THE -00XX IS THE COLOR DESIGNATOR FOR UPHOLSTERY.
 - d. THE 5TH DESIGNATOR: "X" WITHIN -XXXXX DEFINES THE HEAD STRAP OR CUSTOM PRODUCTS BRAND. THIS IS SPECIFIED ON SALES ORDERS.
 - e. THE -XXXXX IS CREATED BY COMBINING THE -XX, -00XX AND THE 5TH DESIGNATOR. ALL X'S SHOULD BE DEFINED ON THE SALES ORDER.

REVISION HISTORY				
REV	DATE	DESCRIPTION	ECO	BY
A	4/28/2011	RELEASE FOR PRODUCTION	13518	JJJ
B	1/6/2014	UPDATE PARTS: 731-2626-XX,731-2605-XX,731-2557-XX,731-2574-XX ADD PARTS: 731-6083-XX,731-5922-XX,731-6080,731-6081-XX,731-5918-XX, 731-5920-XX, 731-577,731-5960,REMOVE PARTS:731-2877,731-2876,731-2640, 731-2627,731-2626-XX,731-2621,731-2620,731-2605-XX,731-2600-XX, 731-2589-XX,731-2297,731-1374,731-0390,CHANGE QTY:731-0355	14508	RLH
C	10/2/2014	ADD CASTLE NUT: 731-6104, CHANGED UPPER SHAFTS FROM 731-2578 TO: 731-6105, ADD COTTER PIN: 731-6107, ADDED WASHER: 731-2969, CHANGED LOWER PIVOT SHAFT FROM 731-2578 TO 731-6430, ADDED NUT 110-3624 TO LOWER PIVOT SHAFT.	14765	KY



DOCUMENT STATUS:

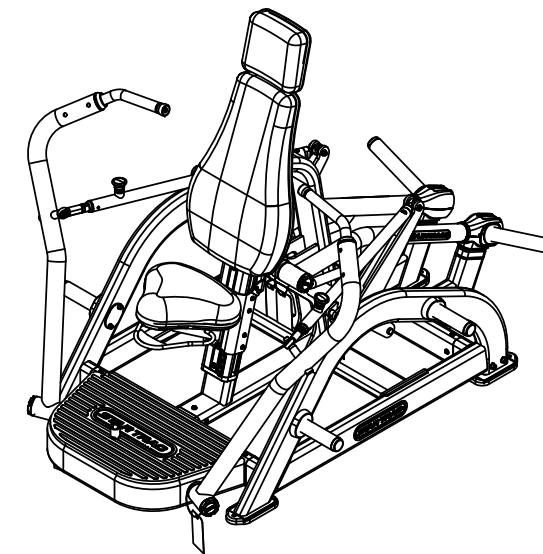
NOTICE OF PROPRIETARY INFORMATION
THIS DOCUMENT SHALL NOT BE REPRODUCED NOR SHALL THE INFORMATION CONTAINED HEREIN BE USED BY OR DISCLOSED TO OTHER EXCEPT AS EXPRESSLY AUTHORIZED BY CORE HEALTH & FITNESS, LLC.

CLASS OF WORK	UNLESS OTHERWISE SPECIFIED DIMS ARE IN mm. TOLERANCES FOR MEASURE OF LENGTH ARE:							ANGLES = ±2°
	0.5 to 3	> 3 to 6	> 6 to 30	> 30 to 120	> 120 to 400	> 400 to 1000	> 1000 to 2000	
FINE	±0.05	±0.05	±0.1	±0.15	±0.2	±0.3	±0.5	----
MEDIUM	±0.1	±0.1	±0.2	±0.3	±0.5	±0.8	±1.2	±2
COARSE	±0.2	±0.3	±0.5	±0.8	±1.2	±2	±3	±4
VERY COARSE	----	±0.5	±1	±1.5	±2.5	±4	±6	±8

MATERIAL SEE BOM	THIRD ANGLE PROJECTION 	
FINISH N/A	DRAWN JJJ	DATE 4/28/2011
VENDOR: N/A	U.O.M.	MM
P/N: N/A		

CORE HEALTH & FITNESS, LLC 4400 NE 77th Ave., Suite 300 Vancouver, WA 98662		
CORE PART NO	REV	
IP-L2002-XXXXX	C	
TITLE LEVERAGE, CHEST PRESS		
SCALE: 1:25	SHEET 1 OF 9	SHEET SIZE: B

9		8			7		6			5		4		3		2		1		
ITEM NO.	PART NUMBER	DESCRIPTION			QTY.	ITEM NO.	PART NUMBER	DESCRIPTION			QTY.									
J	1	110-3402	SCREW, #8-18, 3/4", HI-LOW, PHT, PH, CS, BO			6	54	731-2591	O-RING 30X3.55-A			6								
	2	110-3624	NUT, M24, NKL			2	55	731-2592	SEAL, HOUSING			6								
	3	731-0022-00XX	ASSY, UPHOLSTERY, HEAD REST			1	56	731-2595	TAPPER ROLLER BEARING, 30304 GB 297-94			6								
	4	731-0033	NUT, RIVET, M8 X 1.25			7	62	731-2596	O-RING, BEARING CAP SEAL			6								
	5	731-0076	PULL PIN, SEAT ADJ			1	58	731-2605-XX	WELDMENT, CHEST ARM, RIGHT			1								
I	6	731-0077	LINKAGE, PULL PIN, SEAT ADJ			2	59	731-2606	DIE CAST END CAP, L2			2								
	7	731-0097-00XX	ASSY, SEAT BOTTOM, STD			1	60	731-2607	WEDGE, END CAP,			2								
	8	731-0209	CAP, END, 110 X 50			1	61	731-2608	BOLT, M8X70mm HSHCS			2								
	9	731-0350	Screw, M10X1.5, 25mm, SHC, HK			9	62	731-2609	BASE, HANDLE GRIP, ARMS, L2			2								
	10	731-0352	SCREW, M6X0.8, 10MM, BHC, HK			6	63	731-2614	BALL JOINT, MALE, LEVERAGE			2								
	11	731-0355	WASHER, PLAIN, M8, NARROW			54	64	731-2616	NUT, JAM, M16X2.0			4								
H	12	731-0359	SCREW, M8 X 1.25, 25mm, BHC, HK			32	65	731-2617	ASSY, LINK SHORT, 204MM			2								
	13	731-0363	NUT, M10X1.5, NYLOC			4	66	731-2622	BAR, BUSHING, MISS-ALIGNMENT			4								
	14	731-0364	SCREW, M8X1.25, 45mm, BHC, HK			1	67	731-2623	SHOULDER BOLT B18.3m-10X50 SHSS			2								
	31	731-0365	NUT, M8 X 1.25, NYLOC JAM			11	68	731-2626-XX	WELD, CHEST ARM, LEFT			1								
	16	731-0367	WASHER, PLAIN, M10			21	69	731-2628	STICK, ADJUST, ROM			2								
	17	731-0368	SCREW, M8 X 1.25, 40mm, BHC, HK			8	70	731-2632	BALL JOINT, FEMALE, LEVERAGE			2								
G	18	731-0373	WASHER, PLAIN, M6			4	71	731-2633	BAR, ROM, SLIDE			2								
	19	731-0382	ROLL PIN, M6 X 20mm			1	72	731-2634	BUSHING, ROM, SLIDER			2								
	20	731-0383	Cover, Head Rest			1	73	731-2635	SLIDER, ROM, END CAP			2								
	21	731-0385	SHROUD, SEAT BOTTOM			1	74	731-2640-XX	WELD, FOOT, MAX RACK, RH			2								
	22	731-0397	SCREW, M8 X 1.25, 25mm, FHM, HK			3	75	731-2645-001	PLACARD, CHEST PRESS, LEVERAGE 2			1								
F	23	731-0421	SCREW, M8 X 1.25, 30MM, SHC, HK, CS			14	76	731-2647	FOOT, LONG, LEVERAGE			6								
	24	731-0510	STICKER, SEAT ADJ, 1-9			1	77	731-2648-00XX	ASSY, BACK REST, STD, ONE COLOR			1								
	25	731-0550-01	COVER, SEAT BACK, STD., LEFT			1	78	731-2649	LABEL, STAR TRAC, DECO, LARGE			2								
	26	731-0550-02	COVER, SEAT BACK, STD, RIGHT			1	79	731-2755	LEVERAGE LOGO			2								
	27	731-0555-XX	WELD, MOUNT, TROLLEY, SEAT			1	80	731-2756	DBL STICK TAPE, LEVERAGE, LOGO			2								
E	28	731-0557	SPACER, WHEEL, TROLLEY			8	81	731-2762	RUBBER BUMPER			2								
	29	731-0560	ASSY, WHEEL, 41M DIA, TROLLEY			8	90	731-2856	PLASTIC WEIGHT HORN COVER TRIM INSERT			2								
	30	731-0561	WASHER, M8, 1MM THK			14	83	731-2857	PLASTIC WEIGHT HORN COVER TOP			1								
	31	731-0562	NUT, M8 X 1.25, NYLOC			8	84	731-2858	PLASTIC WEIGHT HORN COVER BOTTOM			1								
	32	731-0564	EXTRUSION, TROLLEY, SEAT			1	85	731-2862	WELDMENT, CHEST, ROM, STRAIGHT			2								
	33	731-0565	SCREW, M4X22, FHT, PH, AS, ZP			8	86	731-2866	PLASTIC, WEIGHT HORN COVER, TOP			1								
D	34	731-0566	CAP, EXTRUSION, SEAT, TOP			2	87	731-2867	PLASTIC, WEIGHT HORN COVER BOTTOM			1								
	35	731-0567	BAR, ADJ, SEAT			1	88	731-2969	WASHER, M16, NP			6								
	36	731-0570	SCREW, M8 X 1.25, 16mm, SHC, HK			4	89	731-3466	ASSY, LEV, BIG PIN			2								
	37	731-0574-XX	MOUNT, SHOCK, SEAT			1	90	731-3958	LEVERAGE NUT TOOL			1								
	38	731-0577	ASSY, SHOCK, SEAT SLED, 30LBS			1	91	731-5256	WELD, WEIGHT HORN, SINGLE			4								
	39	731-0601	SPRING, EXTENSION, 2.0", 21 LBS			1	92	731-5259	BUMPER, STOP, WGT			6								
C	40	731-0672-XX	WELD, SEAT REST, MOUNT -5DEG			1	93	731-5272	CAP, PLUG, WEIGHT HORN, BLANK			6								
	41	731-0674	ASSY, HANDLE, SEAT ADJ -5DEG			1	94	731-5777	TAG, LEVERAGE, SHAFT, TAB WASHER			6								
	42	731-0842	ASSY, BRG, TAPER, 30205			6	95	731-5918-XX	WELD, CHEST WEIGHT FRAME, LEFT			1								
	43	731-1030	PIN, SPLIT, 2MM X 12			1	96	731-5920-XX	WELD, CHEST WEIGHT FRAME, RIGHT			1								
	44	731-1450	SCREW, M8 X 1.25, 75mm, SHC, HK, AS, ZP			8	97	731-5922-XX	WELD, WEIGHT ARM, CHEST, LEFT			1								
B	45	731-1456-01	PLATE, MOUNT, WGT HOLDER, BLANK			4	98	731-5960	TWIST TIE			6								
	46	731-1713	PIN, CLEVIS, M6 X 22, 15.9UL			1	99	731-6080	STOP, LEVERAGE			2								
	47	731-2416	STICKER, STARTRAC, 70MM, DECO			2	100	731-6080	WELD, BELL CRANK, CHEST, LEFT			1								
	48	731-2557-XX	MID FRAME, CHEST PRESS, L2			1	101	731-6081	WELD, BELL CRANK, CHEST, RIGHT			1								
	49	731-2569-XX	WELDMENT, L2 STOP, ANGLED			1	102	731-6083-XX	WELD, WEIGHT ARM, CHEST, RIGHT			1								
	50	731-2574-XX	WELDMENT, CHEST, FOOT REST			1	103	731-6104	Slotted Hex Nut, Low, M16X1.5mm			6								
A	51	731-2575	ASSEMBLY, FOOT PAD, LEVERAGE			1	104	731-6105	BAR, PIVOT AXLE, L2, Castle			4								
	52	731-2580	M10 X 65MM HSHCS			4	105	731-6107	PIN, COTTER, 3.2mm DIA x 32mm LONG			6								
	53	731-2590	END CAP, BEARING, SEAL,			6	106	731-6430	BAR, PIVOT AXLE, L2, LONG			2								

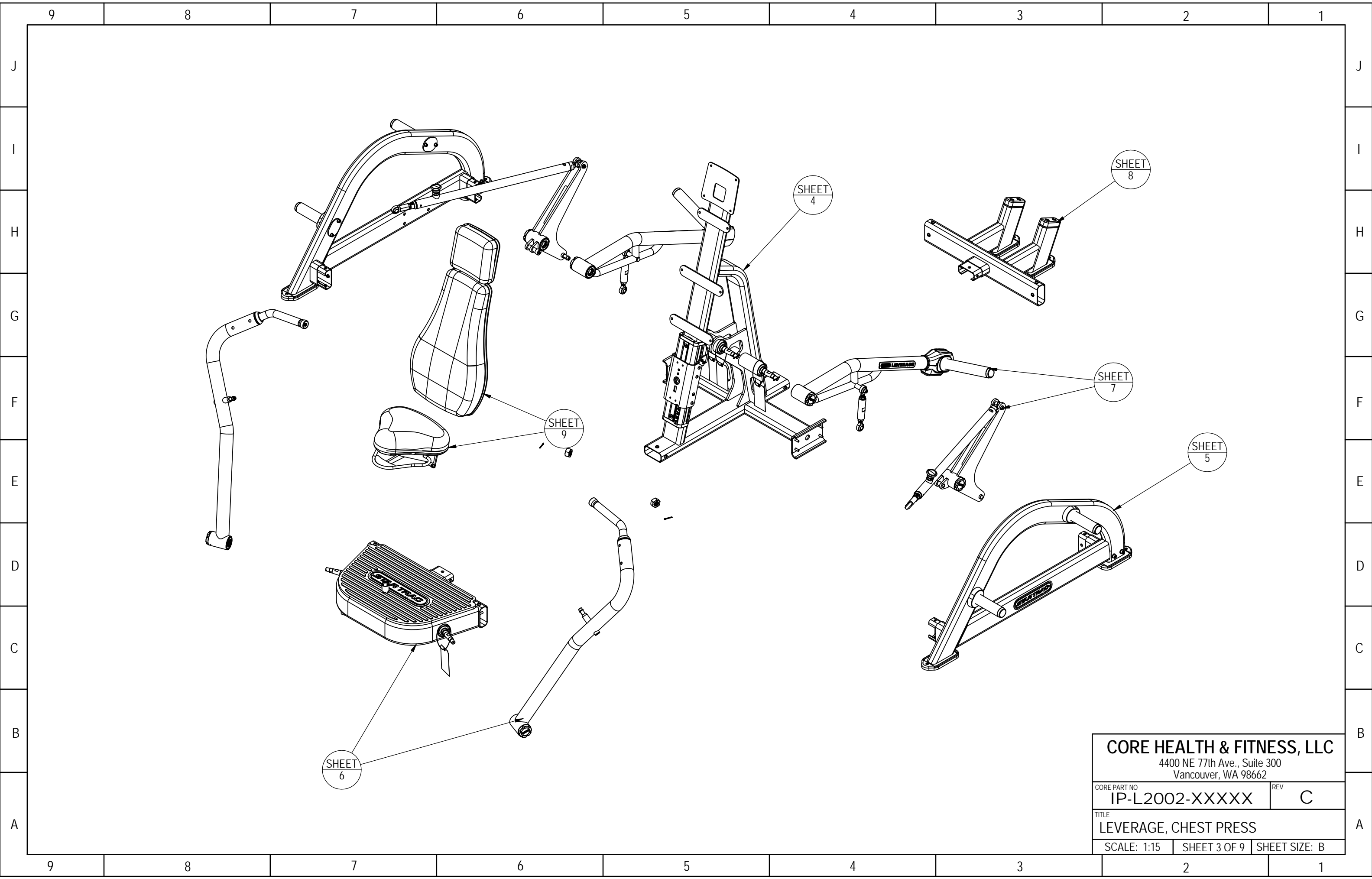


CORE HEALTH & FITNESS, LLC
 4400 NE 77th Ave., Suite 300
 Vancouver, WA 98662

CORE PART NO: IP-L2002-XXXXX REV: C

TITLE: LEVERAGE, CHEST PRESS

SCALE: 1:25 SHEET 2 OF 9 SHEET SIZE: B

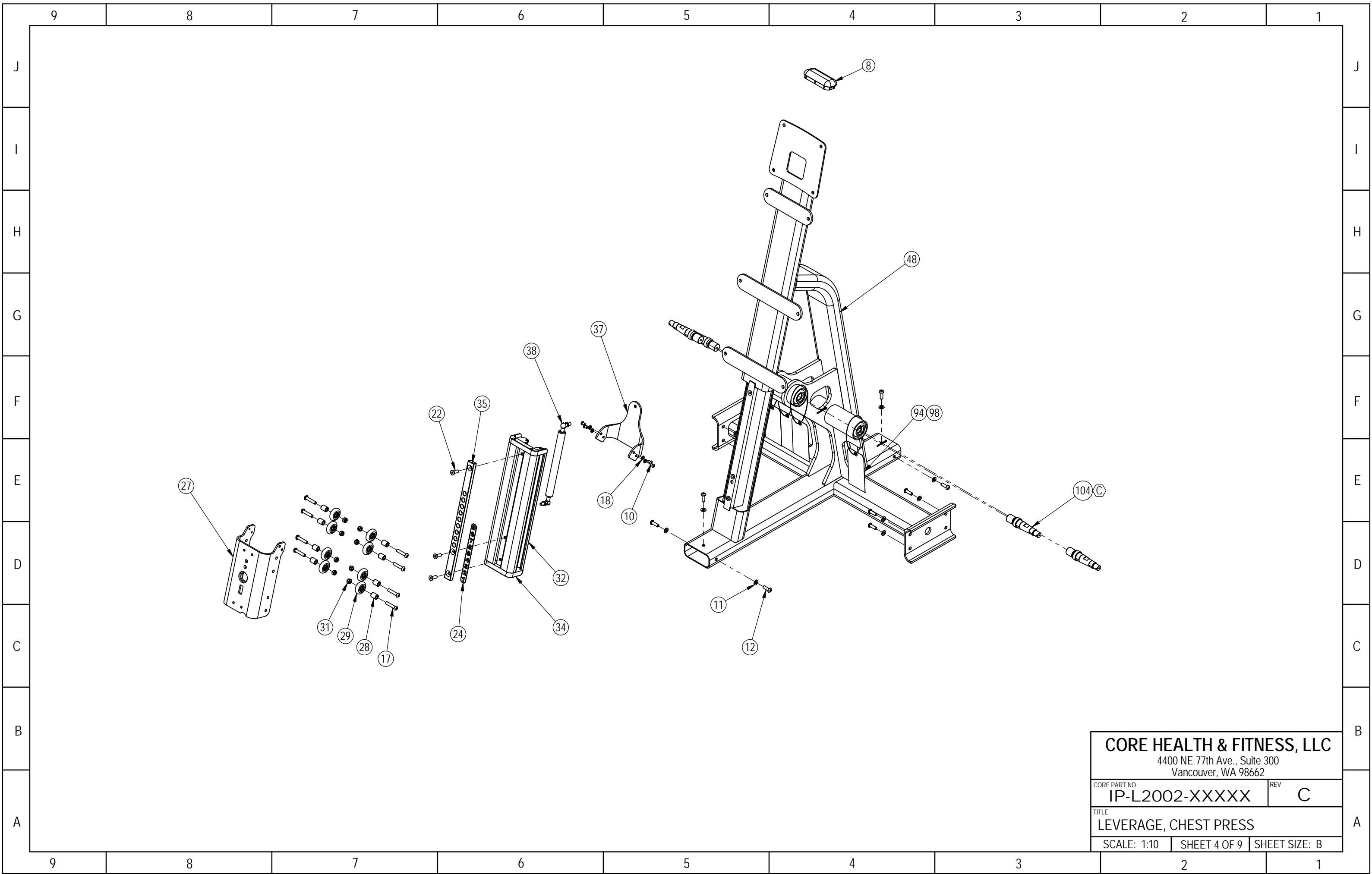


CORE HEALTH & FITNESS, LLC
 4400 NE 77th Ave., Suite 300
 Vancouver, WA 98662

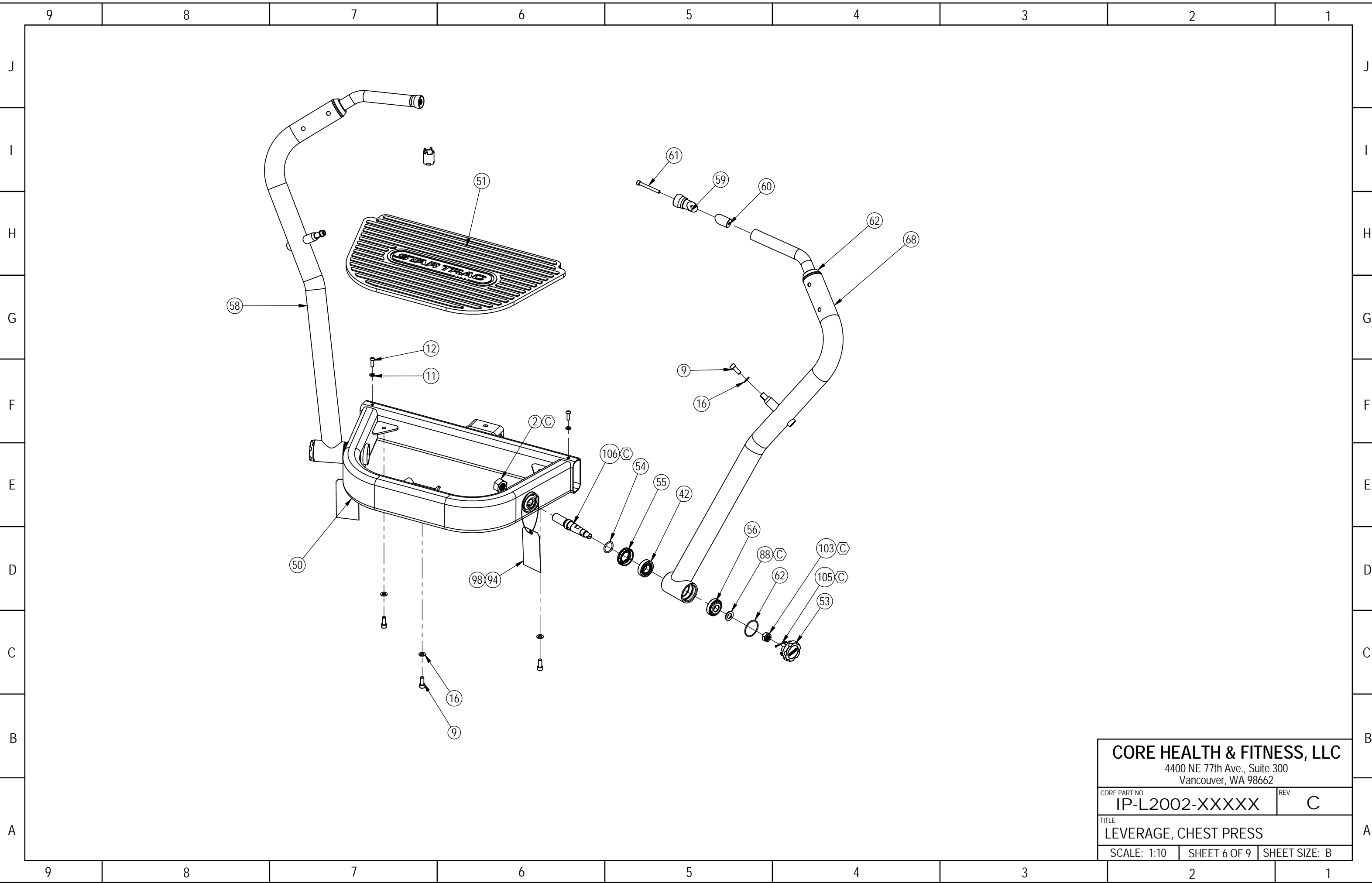
CORE PART NO	REV
IP-L2002-XXXXX	C

TITLE
LEVERAGE, CHEST PRESS

SCALE: 1:15	SHEET 3 OF 9	SHEET SIZE: B
-------------	--------------	---------------



CORE HEALTH & FITNESS, LLC		
4400 NE 77th Ave., Suite 300 Vancouver, WA 98662		
CORE PART NO	REV	
IP-L2002-XXXXX	C	
TITLE		
LEVERAGE, CHEST PRESS		
SCALE: 1:10	SHEET 4 OF 9	SHEET SIZE: B

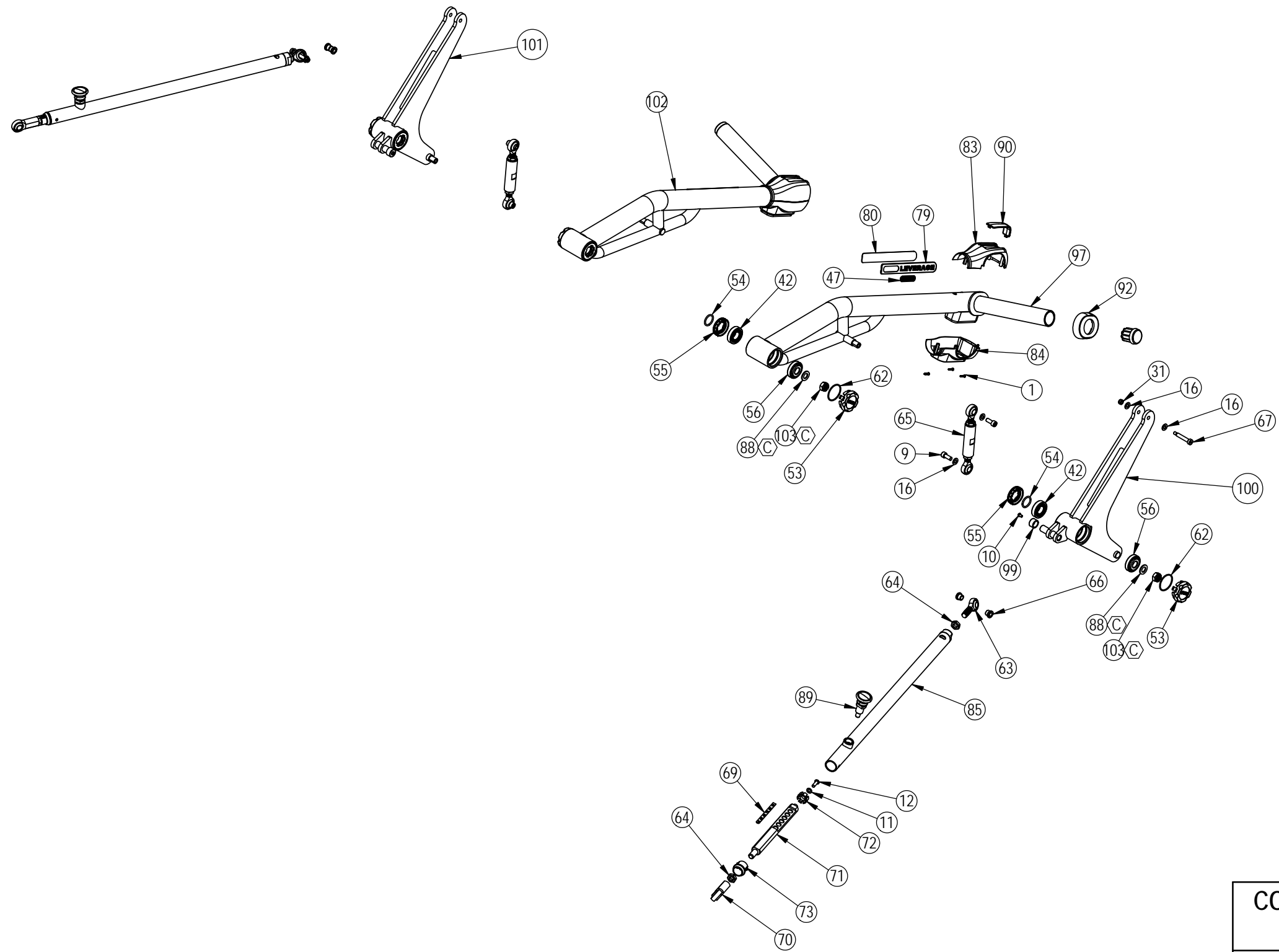


CORE HEALTH & FITNESS, LLC
 4400 NE 77th Ave., Suite 300
 Vancouver, WA 98662

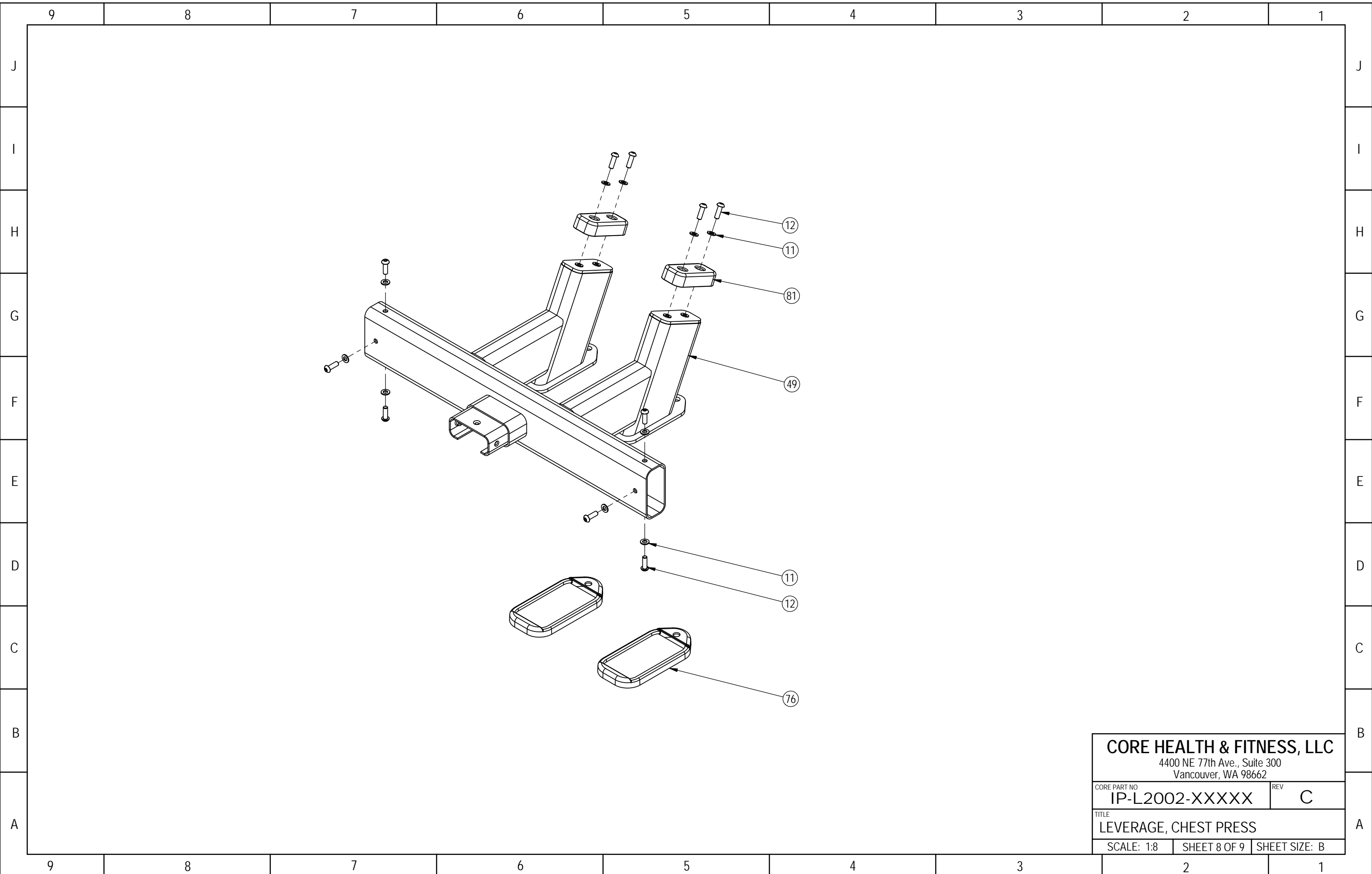
CORE PART NO	REV
IP-L2002-XXXXX	C

TITLE
LEVERAGE, CHEST PRESS

SCALE: 1:10	SHEET 6 OF 9	SHEET SIZE: B
-------------	--------------	---------------



CORE HEALTH & FITNESS, LLC 4400 NE 77th Ave., Suite 300 Vancouver, WA 98662		
CORE PART NO	IP-L2002-XXXXX	REV C
TITLE LEVERAGE, CHEST PRESS		
SCALE: 1:10	SHEET 7 OF 9	SHEET SIZE: B



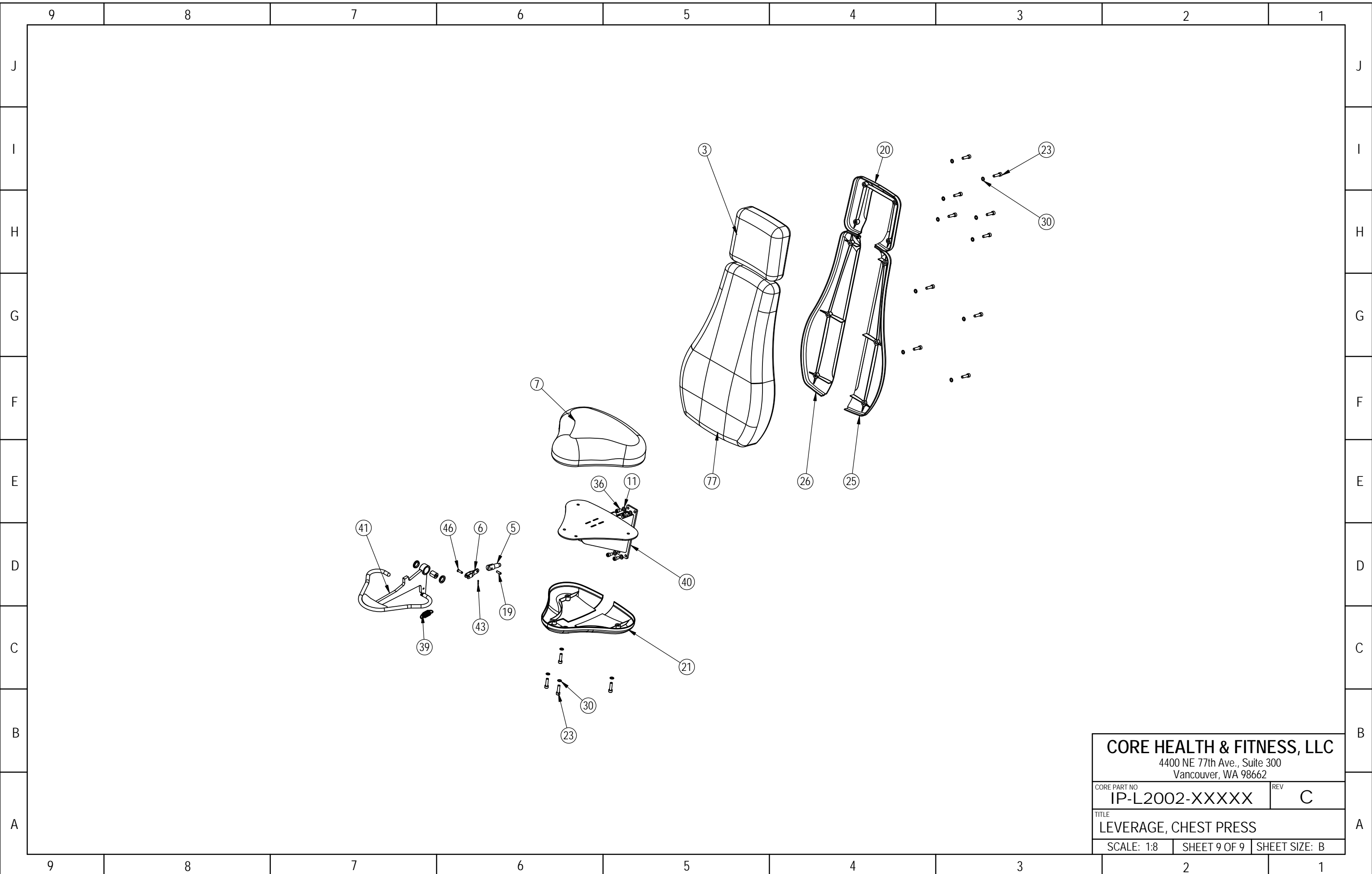
CORE HEALTH & FITNESS, LLC
 4400 NE 77th Ave., Suite 300
 Vancouver, WA 98662

CORE PART NO	IP-L2002-XXXXX	REV	C
--------------	----------------	-----	---

TITLE	LEVERAGE, CHEST PRESS		
-------	-----------------------	--	--

SCALE: 1:8	SHEET 8 OF 9	SHEET SIZE: B
------------	--------------	---------------

B
A



CORE HEALTH & FITNESS, LLC		
4400 NE 77th Ave., Suite 300 Vancouver, WA 98662		
CORE PART NO	IP-L2002-XXXXX	REV C
TITLE LEVERAGE, CHEST PRESS		
SCALE: 1:8	SHEET 9 OF 9	SHEET SIZE: B